



Jardon Vocational School Parent Newsletter From The Principal



April 20th, 2025

Dear Jardon/Webb Community,

Here we are in the last full week of April. The weather can be quite unpredictable so students should plan to layer their clothing so they can adjust to the changing temperatures throughout the day. As it gets warmer, there may be more opportunities for students to be outside, such as during lunch.

Students planning to participate in the talent show have been spending some of their free/leisure time preparing and practicing for their performances. This is going to be an event you don't want to miss!

We have four students who will be completing their Jardon educational career this year. We have a graduation ceremony planned for them on Thursday evening, May 29, at 6:00 p.m. Please come help us honor these individuals as they complete their time at Jardon.

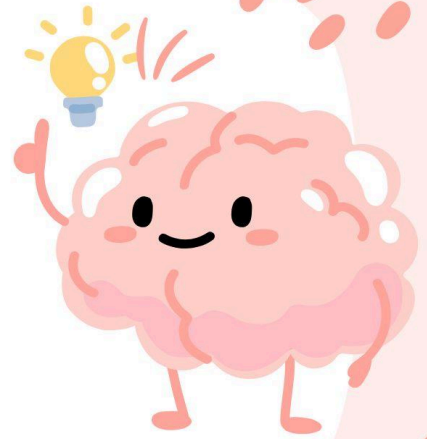
Please join us on social media! Find us on Facebook by searching for Jardon Vocational School. You will see regular updates posted there about what's going on at Jardon! Please feel free to contact me at heidi.kunz@myhpsd.org or 248-658-5953, if you have any questions or concerns.

Thank you,

Heidi Kunz

APRIL

**APRIL 24TH- DISNEY DANCE PARTY
FUN NIGHT 6-7:45 PM
ADMISSION \$5**



BAGEL DAYS

FRIDAY, MAY 2ND

FRIDAY, MAY 16TH

FRIDAY, MAY 30TH

BAGEL - \$1.00

BAGEL WITH CREAM CHEESE - \$1.50



Disney Dance Party Fun Night

Join us for a Fun Night of Food, Music, Karaoke and a
"Disney Dance Party"

Come dressed as your favorite *Disney Character* and sing some Karaoke.


Thursday, April 24th, from 6-7:45 P.M.

Admission will be \$5.

Please **R.S.V.P** no later than Wednesday, April 23rd, in the office.

248-658-5950





Under The Sea

Jardon

Spring Formal

Thursday, May 15, 2025

6:00-9:00 PM

Club Venetian
Banquet Center
29310 John R.
Madison Heights, Mi.
48071

RSVP & Payment due by Tuesday,
April 29, 2025

\$25 per attendee (all
admissions require a
purchased ticket)



Hazel Park Schools

Jardon Vocational School

2025

Graduation Ceremony

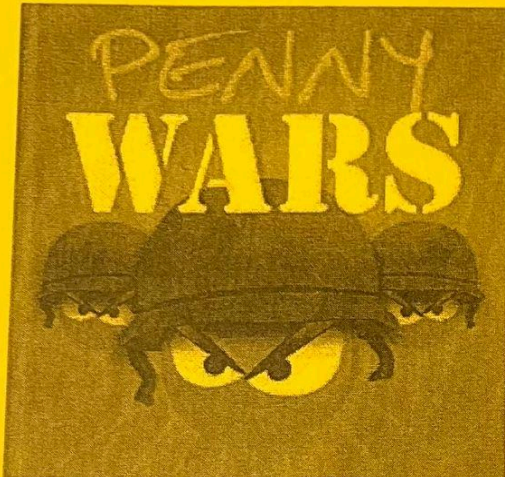
May 29th, 2025 | 6:00 PM

2200 Woodward Heights

Ferndale MI, 48220

RSVP to the front office

248-658-5950



MON, APRIL 21 - MON, APRIL 28

RULES

Each classroom will have a collection jar located in their room.

Gain points by adding pennies & bills to your classroom jar.

Lower other classroom's totals by adding silver coins to their jar.

POINTS

BILLS AND PENNIES

- Each Penny + 1 pt
- \$1 Dollar Bill + 100 pts
- \$5 Dollar Bill +500 pts
- \$10 Dollar Bill +1000 pts

SILVER COINS

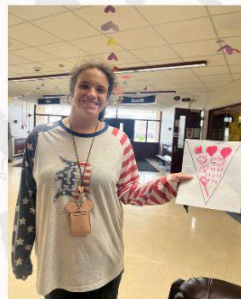
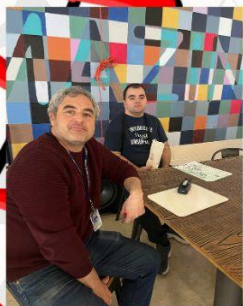
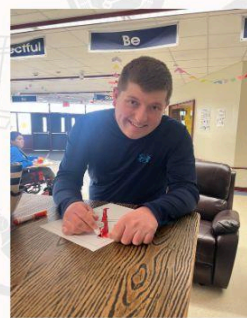
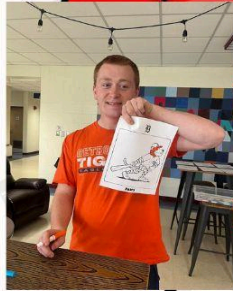
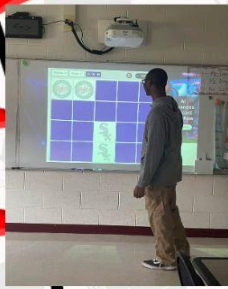
- Nickels -5 pt
- Dimes -10 pts
- Quarters -25 pts
- \$1 coin -100 pts

PRIZE

Ice Cream Sundae Party for Winning
Classroom!!

TAKE ME OUT TO THE BALL GAME

APRIL SOCIAL



JARDON BOCCE BALL
2025 Spring Season Game Schedule



Tuesday, April 8: 2:30 - 4:00 at Jardon, family pick up

Tuesday, April 15: 2:30 - 4:00 at Jardon, family pick up

Tuesday, April 22: 2:40 - 4:00 at Jardon, family pick up

Monday, April 28: 2:30 - 4:30 at Berkley High School
(2325 Catalpa, Berkley 48072)

Jardon to transport to Berkley High School, family to pick up
at field across the street from Berkley High School

Tuesday, May 6: 2:30 - 4:00 at Jardon, family to pick up

Tuesday, May 13: 2:30 - 4:00 at Jardon, family to pick up

Tuesday, May 20: 2:30 - 4:30 at Jardon, family to pick up

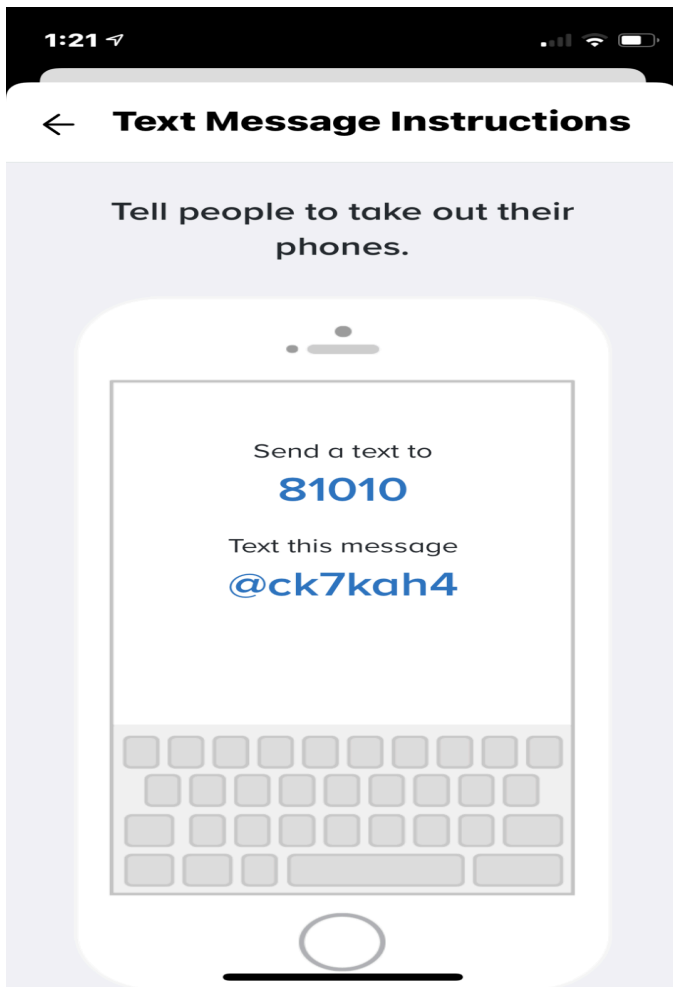
Berkley athletes come to play

Tuesday, May 27: 2:30 - 4:00 at Jardon, family to pick up

JARDON BOCCE BALL

2025 Spring Season

We will be using the app 'Remind' to inform athletes and families/caregivers of changes to schedule (i.e.: practice canceled, times change for games, etc.) or other important information.... People can also contact us this way to inform the coaches of absences or such. To join Remind.....



You're Invited to the Jardon Talent Show!

Come celebrate the creativity and talent of our amazing students at the Jardon Talent Show!

Date: Friday, May 23rd

Time: 9:30 AM – 10:45 AM

Location: Webb Elementary Gym (Please enter the building directly through the gym which is Door #7)

Enjoy music, dancing, skits, and more as our students shine on stage. We hope to see you there cheering them on!

If you have any questions, feel free to contact us at Jardon at 248-658-5950





Jardon MoCI Community-Based Instruction for the Upcoming Week:

- Monday- 4/21- P.M. - Meijer
- Thursday- 4/24- P.M.- Berkeley Police/Fire Station

Jardon ASD Community-Based Instruction for the Upcoming Week:

- Monday - 4/21- P.M. - Ferndale Foods
- Thursday- 4/24- P.M.- Carpenter Lake Nature Preserve

(All CBI locations are subject to change due to weather etc.)





JARDON FLOWER SALE

2200 Woodward Heights Avenue

MAY 7-9 & 12-14, 2025

 **8:30 AM TO 3 PM**
DURING SCHOOL DAYS

**HANGING BASKETS
PORCH POTS
FLATS
HERBS
VEGETABLES
SUCCULENTS
FOLIAGE
AND SO MUCH MORE...**



**YOU CAN ALSO PURCHASE
HOMEMADE DOG BISCUITS, GREETING
CARDS, HOT SOCKS, SUGAR SCRUBS,
BIRD FEEDERS, FIRE STARTERS,
COASTERS, AND MUCH MORE.**

New School Store Menu

CONCESSIONS



CANDY

| | | | |
|----------------|-----|-------------------|------|
| Twix | \$1 | Swedish Fish | \$1 |
| Hershey's Bars | \$1 | Fruit by the Foot | .50¢ |
| Kit Kat | \$1 | Skittles | \$1 |
| | | M&M's | \$1 |

SNACKS

| | | | |
|----------|------|---------------------------|------|
| Pickles | .50¢ | Famous Amos Cookies | .50¢ |
| Chips | .50¢ | Oreos | \$1 |
| Cheez-It | .50¢ | StroopWaffle | .75¢ |
| Pretzels | .50¢ | Chips Ahoy | \$1 |
| Popcorn | .50¢ | Nature Valley Protein Bar | \$1 |

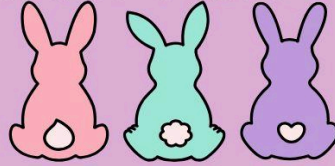
BEVERAGES

| | | | |
|------------------------|------|--------------|-----|
| Bottled Water | .50¢ | Sports Drink | \$1 |
| Flavored Bottled Water | \$1 | Juice | \$1 |
| Pop | \$1 | Coffee | \$1 |

JARDON MOCI STUDENTS



Just From Jessi Transition Coordinator



As our students mature, they may be seeking more independence. Independence looks different for everyone, so how can we help build support for individuals to be as independent as they desire? There are a variety of resources available in Oakland County, and I wanted to share a couple this week. It is so important for our students' voices to be heard and present when discussing their futures while at the same time keeping their safety and care at the forefront. If you have any questions or want to know more about resources in Oakland County, please feel free to reach out to me.

Resource Features:

MOLLY DAVID MDAVID@SEMPERGRATA.COM

Planning for the Future: Protecting a Loved One with a Disability

I have been through this process and want to help make it easier for others. My daughter, Reagan, had Rett Syndrome. She passed away in December 2023 at 23. I have learned a lot, made mistakes, and figured out how to correct them. I created Semper Grata (Always Welcome) with the goal of helping families and educating communities. Website to provide information to parents and caregivers. www.sempergrata.com which expanded to publishing www.mollydavidauthor.com.

Are you struggling to find resources and services for your child with a disability? Do you live in Wayne or Oakland County, MI?

This ebook is for you. Award-winning author and speaker, Molly David, has created a guide with links to help you find what your child needs.

It includes information on Medicaid Waivers, Children's Special Health Care, the Special Needs Fund, and more.

Click here to purchase: \$4.99

ACCESSING DISABILITY RESOURCES
A GUIDE FOR PARENTS
FOR SOUTHEAST MICHIGAN
WAYNE AND OAKLAND COUNTIES
BY MOLLY DAVID

Oakland County Health Network:

OAKLAND COMMUNITY HEALTH NETWORK

OAKLAND COUNTY'S PUBLIC BEHAVIORAL HEALTH SYSTEM

Supported Decision Making Toolkit

Learn about this great resource regarding Supported Decision Making. This presentation will provide education about the **SUPPORTED DECISION MAKING TOOLKIT**. Learn how to use it, what resources are included in it and where to find it. Supported Decision Making offers many options, other than guardianship, to provide support and counsel to individuals.

When?

April 29, 2025, 11 a.m. - 12 p.m.

Where?

Virtual Teams Meeting

Presenter:

Mary Shehan
Community Inclusion Coordinator
Michigan Developmental
Disabilities Council

Social Work CEU 1.0 pending

To register, visit
oaklandchn.org/Activities or
scan the QR code below.



Please register by April 18, 2025

INSPIRE HOPE, EMPOWER PEOPLE, AND STRENGTHEN COMMUNITIES

5505 Corporate Drive
Troy, MI 48068

Oakland Community
Health Network

248-658-1210
www.oaklandchn.org

Jessi Haines
Jardon Transition Coordinator
Hazel Park School District
(248) 658 - 5958
jessica.haines@myhpsd.org



Medical Visits and ASD

Parents and caregivers of loved ones on the Autism Spectrum (as well as other neurodivergent conditions) are very familiar with the challenges that come with seeking medical care. Here are some ways to make these visits less stressful and set your loved one up for success!

- Timing of appointments: If your loved one is amenable, scheduling as the very first or very last patient of the day will allow for a little more flexibility, time wise, for both patient and provider¹.
- Let the provider's office know ahead of time of any accommodations your loved one will need (adjustments in lighting, use of a comfort item, etc.) that will help the visit be more comfortable and successful².
- Prepare your loved one ahead of the visit on why the visit is needed, and when possible, how to answer questions commonly asked by healthcare providers, such as "What is your name/birthday/phone number/emergency contact/what medical conditions do you have/medicines are you taking?" (J. Springsteen, personal communication, March 2025)
- During the visit, encourage providers to speak simply and directly, explaining what they are doing before they do it. Share any signs of distress, such as agitation, to assist the care team in how to proceed. Providing rewards and positive reinforcements that you know will motivate your loved one can be helpful².

Also of interest - ATN @ Work: Visual supports ease medical visits for kids with autism: Clinicians at Vanderbilt Medical Center demonstrate how visual supports can empower young patients with developmental disabilities.

<https://www.autismspeaks.org/science-blog/atnwork-visual-supports-ease-medical-visits-kids-autism>

Be well

Nurse Stephanie

248-658-5956

stephanie.fowlereagan@myhpsd.org

References:

1. Autism Speaks. (2021) *Study offers a new model for primary care clinics serving adults with autism*. Retrieved 04-15-2025 from <https://www.autismspeaks.org/science-news/study-offers-new-model-primary-care-clinics-serving-adults-autism#:~:text=Current%20primary%20care%20models%20are,care%20than%20the%20general%20population.>

2. Dr. Sohl, Kristen. (2025) *Autism and the doctor visit: communication tips for success*. Retrieved 04-15-2025 from <https://www.autismspeaks.org/expert-opinion/autism-and-doctor-visit-communication-tips-success>

April 2025

Jardon Vocational School
Lunch

| MONDAY | TUESDAY | WEDNESDAY | THURSDAY | FRIDAY |
|---|--|---|---|---|
| | 1 Lunch • Sweet & Sour Chicken • Cheese Stuffed Breadsticks • Marinara Sauce • EZ Jammer Wowbutter & Jelly Sandwich | 2 Lunch • Mini Chicken Corn Dogs • Breaded Chicken Drumstick • Muffin, Goldfish & Yogurt Fun Lunch | 3 Lunch • Boneless Chicken Wings • Toasty Cheese Sandwich • Popcorn Chicken Salad • Flatbread | 4 Lunch • Cheesy Italian Pull Apart • Classic Pepperoni Pizza • EZ Jammer Wowbutter & Jelly Sandwich |
| 7 Lunch • Macaroni & Cheese • Fiestada Pizza • Turkey Ham & Cheese Sandwich | 8 Lunch • Jumbo Crispy Chicken Tenders • Southwest Queso Pull Apart • Salsa • EZ Jammer Wowbutter & Jelly Sandwich | 9 Lunch • BBQ Oven Roasted Chicken Drumstick • Bacon Cheeseburger • Muffin, Goldfish & Yogurt Fun Lunch | 10 Lunch • Personal Cheese Pizza • Hot Turkey Ham & Cheese Bagel • Popcorn Chicken Salad • Flatbread | 11 |
| 14 Lunch • Mini Cheese Ravioli with Marinara Sauce • Chicken Tenders • Whole Grain Dinner Roll • Turkey Ham & Cheese Sandwich | 15 Lunch • Beef Nachos • Cheese Stuffed Breadsticks • Marinara Sauce • EZ Jammer Wowbutter & Jelly Sandwich | 16 Lunch • Mini Chicken Corn Dogs • Breaded Chicken Drumstick • Whole Grain Dinner Roll • Muffin, Goldfish & Yogurt Fun Lunch | 17 | 18 |
| 21 Lunch • Macaroni & Cheese • Fiestada Pizza • Turkey Ham & Cheese Sandwich | 22 Lunch • Beef Taco Meat • Southwest Queso Pull Apart • EZ Jammer Wowbutter & Jelly Sandwich | 23 Lunch • BBQ Oven Roasted Chicken Drumstick • Bacon Cheeseburger • Muffin, Goldfish & Yogurt Fun Lunch | 24 Lunch • Chicken & Cheese Quesadilla • Turkey Ham & Cheese Bagel Melt • Popcorn Chicken Salad • Flatbread | 25 Lunch • Jumbo Crispy Chicken Tenders • Classic Pepperoni Pizza • EZ Jammer Wowbutter & Jelly Sandwich |
| 28 Lunch • Cheese Lasagna Rollup • Chicken Tenders • Turkey Ham & Cheese Sandwich | 29 Lunch • Sweet & Sour Chicken • Cheese Stuffed Breadsticks • Marinara Sauce • EZ Jammer Wowbutter & Jelly Sandwich | 30 Lunch • Mini Chicken Corn Dogs • Breaded Chicken Drumstick • Muffin, Goldfish & Yogurt Fun Lunch | | |

If you have a food allergy, please notify us. Ask your cafeteria manager if changes were made to today's menu so we can help keep you safe!

Menus Subject to Change We try our best to serve our menus as posted; however, sometimes last minute changes occur. Please check with the cafe manager prior to the meal if you have any concerns.

This institution is an equal opportunity provider. Layout & Design © Nutrislice, Inc. Printed on 4/1/2025 at 10:55 am .





Hazel Park Schools Administration Building

1620 E. Elza Hazel Park



*Distribution Dates Are Fridays (**unless in bold**) beginning at 9 am unless noted*

| | | | |
|--------------------------|-------------------|----------------|----------------|
| October 18, 2024 | January 17, 2025 | April 18, 2025 | July 18, 2025 |
| November 19, 2024 | February 14, 2025 | May 16, 2025 | Aug. 15, 2025 |
| December 13, 2024 | March 14, 2025 | June 13, 2025 | Sept. 12, 2025 |

The food goes very quickly, so please come early to get in line. We cannot distribute items until the milk truck arrives and the setup is done.

Hazel Park Schools has partnered with Gleaners Community Food Bank to bring the School Mobile Food Pantry to our students and their families. **Food distributions deliver 20-30 lbs of food, including milk, lean meats, fresh fruits, vegetables, and dry goods every month.**

Please line up in your car in the parking lot, going down Elza in front of the school. **Please do not block any driveways and be sure to line up along the curb to avoid blocking the road.** We appreciate your cooperation in this matter out of respect and safety for our neighbors.

Please have your Gleaners card ready when you arrive. If you are new to Gleaners and do not have a card, you will be asked to fill out a form with your information as well as information for those in your household.

Gleaner's information will be sent by email and voice messages as reminders when you sign up for communications through your children's school.

Sign up for communications may be done through your Parent Portal on PowerSchool or the school district website, www.hazelparkschools.org/parents/resources--quick-links, then click on Alert Sign up.

Contact your Community Representative to help your family with resources for things such as bill pay, eyeglasses, local food pantries, and other resources. We want to make sure that all the needs of our students are addressed to the best of our abilities.

Gleaners Mobile School Pantry Site Coordinators:

Jamie Buczko, Administrative Assistant to the Superintendent
(248) 658-5220 jamie.buczko@myhpsd.org

Nancy Anderson - Human Resource Specialist
(248)658-5201 nancy.anderson@myhpsd.org

This institution is an equal opportunity provider.

